

\\MSERVER\Shared_Folders\Shares\Work\Project Files\Riverside, Pompano Beach\AgLP-4.dwg Saved: 3/20/2025 12:32 PM

PLANT LIST		
KEY	QTY	PLANT AND SPECIFICATION
TREES		
** AM2	2	Adonidia merrillii (Double Adonidia Palm) 12' ht., double, heavy, matched
** N CE	2	Conocarpus erectus (Green Buttonwood) 16-18' ht., 6' spr., standard, 5' c.t., matched
** N CES	2	Conocarpus erectus 'Sericeus' (Silver Buttonwood) 12' ht., 5' spr., standard, 5' c.t., matched
** N CD	8	Coccoloba diversifolia (Pigeon Plum) 12' ht., 5' spr., standard, 5' c.t., matched
** CN	4	Cocos nucifera (Coconut Palm) 12'-14' g.w., heavy, matched
** ED	6	Elaeocarpus decipiens (Japanese Blueberry) 12' ht., 4' spr., standard, 3' c.t., full, matched
** N MF	3	Myrcianthes fragrans (Simpson's Stopper) 12' ht., 5' spr., multi-trunk, 4' c.t., matched
PE	8	Ptychosperma elegans (Alexander Palm) 12' o.a. ht., single, matched
PE2	12	Ptychosperma elegans (Triple Alexander Palm) 16' o.a. ht., double, matched
PE3	5	Ptychosperma elegans (Triple Alexander Palm) 12'-14' o.a. ht., triple, matched
VM	2	Veitchia montgomeryana (Montgomery Palm) 16' o.a. ht., single, heavy, matched
SHRUBS, GROUNDCOVERS & ACCENTS		
** N CHR	50	Chysobalanus icaco 'Horizontalis' (Horizontal Cocoplum) 16" ht., 16" spr., 24" o.c., full
** N CLU	20	Clusia guttifera (Clusia Hedge) 6' ht., 30" spr., 30" o.c., full
** CRI	3	Crinum sp. (White Crinum Lily) 36" o.a., full, 3 p.p.p., full
DIO	3	Dioon edule 4' o.a., symmetrical, matched
** FGI	19	Ficus microcarpa 'Green Island' 14" ht., 14" spr., 18" o.c., full
FIC	29	Ficus pumila (Creeping Fig) 12" o.a., 12" runners, 12" o.c., full
MIC	76	Microsorium scolopendria (Wart Fern) 14" ht., 14" spr., 18" o.c., full
PBM	190	Philodendron 'Burlie Marx' 14" ht., 14" spr., 18" o.c., full
PHI	3	Philodendron giganteum 30" ht., 30" spr., full, matched
** N PSY	152	Psychotria nervosa (Wild Coffee Hedge) 3' ht., 24" spr., 24" o.c., full
** PEN	44	Pennisetum setaceum (White Fountain Grass) 30" ht., 20" spr., 24" o.c., full
POD	129	Podocarpus macrophyllis (Podocarpus Hedge) 5' ht., 24" spr., 24" o.c., full
PRI	91	Podocarpus macrophyllis 'Pringles' 14" ht., 14" spr., 18" o.c., full
PR3	3	Phoenix roebelenii (Triple Pygmy Date Palm) 5' o.a., triple, matched, heavy, full
** N TR	2	Thrinax radiata (Thatch Palm) 4' ht., 3' spr., heavy, matched
SOD		St. Augustine 'Palmetto' Contractor to determine quantity.
MULCH		3" depth, dark brown, non-Cypress mulch Contractor to determine quantity.
SLATE CHIPS		3" depth, medium size Contractor to determine quantity.
N DENOTES NATIVE SPECIES		
** FLORIDA-FRIENDLY SPECIES		

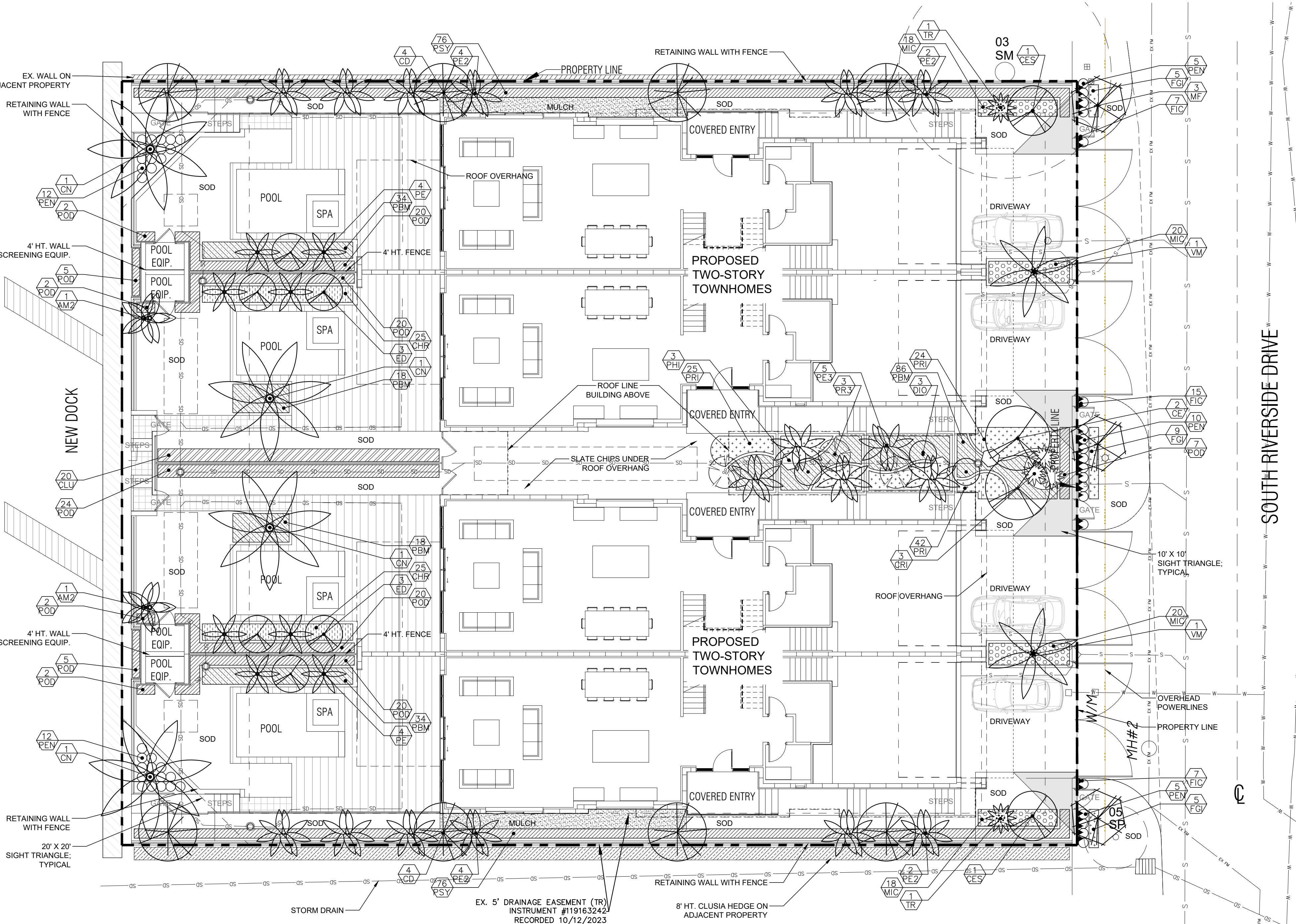
CITY OF POMPAÑO NOTES

- IF THE TREES ARE TO BE CONTAINERIZED THE ROOT BALL SHALL BE SHAVED AT THE PERIPHERY TO REMOVE ALL CIRCLING ROOTS.
- PLANT SPACING SHALL SUPERSEDE PLANT QUANTITY TO FILL THE BED
- AS PER 155.5204.F. NO DEVELOPMENT, WORK, OR DEMO ACTIVITY SHALL BE ALLOWED WITHIN THE DRIPLINE OF A TREE OR TREE PROTECTION AREA.
- FINES AND PENALTIES FOR ENCRoACHMENT INTO THE CRITICAL ROOT ZONES AND WITHIN THE TREE PROTECTION ZONE FOR EXISTING TREES TO BE PROTECTED AND PRESERVED.
- ALL EXISTING TREES WILL BE PRUNED BY AN ISA CERTIFIED ARBORIST UNDER THE DIRECTION OF A BCMA OR ASCA REGISTERED CONSULTING ARBORIST.
- AS PER 155.5204.F.3.d: UNDERGROUND UTILITY LINES SHALL BE ROUTED AROUND THE TREE PROTECTION AREA WHERE POSSIBLE. IF THIS IS NOT POSSIBLE, A TUNNEL MADE BY A POWER-DRIVEN SOIL AUGER MAY BE USED UNDER THE TREE.
- ALL TREES DESIGNATED AS SINGLE TRUNK SHALL HAVE A SINGLE, RELATIVELY STRAIGHT, DOMINANT LEADER, PROPER STRUCTURAL BRANCHING AND EVEN BRANCH DISTRIBUTION. TREES WITH BARK INCLUSION, TIPPED BRANCHES, AND CO-DOMINANT TRUNKS WILL NOT BE ACCEPTED. TREES WITH GIRDLING, INTACT LEADER CIRCLING AND/OR PLUNGING ROOTS WILL BE REJECTED.
- ALL HEDGES ABUTTING CITY RIGHTS OF WAY ARE MAINTAINED AT A HEIGHT NO GREATER THAN 24". IT IS STAFFS RECOMMENDATION THAT ALL TREES VUA PERIMTER TREES BE 14' OA TO CREATE A LARGERST OPTED CLEAR LINE OF SITE FROM ROADWAY.
- PRE-CONSTRUCTION MEETING WITH URBAN FORESTRY IS REQUIRED BEFORE ANY PLANT MATERIAL IS INSTALLED ON SITE.
- ALL ROAD ROCK, CONCRETE, ASPHALT AND OTHER NON NATURAL MATERIAL BE REMOVED FROM ALL PLANTING AREAS PRIOR TO LANDSCAPE INSTALLATION AND BE REPLACED WITH PLANTING SOIL PRIOR TO LANDSCAPE INSTALLATION.
- ALL TREE WORK WILL REQUIRE PERMITTING BY A REGISTERED BROWARD COUNTY TREE TRIMMER.
- LANDSCAPE MATERIALS OTHER THAN SOD ARE NOT ALLOWED WITHIN 5' OF ANY PORTION OF CITY OWNED UTILITIES.
- ALL LANDSCAPE MATERIAL WILL BE FLORIDA #1 GRADE OR BETTER.

NOTES

- AS PER CITY ORDINANCE (S) § 50.02(A) (3) AND § 100.35(G), THAT LANDSCAPING MATERIALS OTHER THAN SOD ARE NOT ALLOWED WITHIN (5') FIVE FEET OF ANY PORTION OF CITY-OWNED UTILITIES WITHIN THE PUBLIC STREET RIGHT OF WAY INCLUDING METERS, HYDRANTS, SERVICE LINES ETC. ALSO, PLEASE NOTE THAT NO TREES, SHRUBBERY OR OBSTRUCTION SHALL BE PLACED WITHIN A 3' RADIUS OF A CITY-OWNED SEWER LATERAL CLEANOUT OR WATER &/ OR REUSE METER. SHOW THE LOCATION OF ALL EXISTING CITY OWNED AND MAINTAINED POTABLE WATER MAINS AND SERVICES. SANITARY SEWER MAINS OR LATERALS AND STORM DRAINAGE LINES ON THE PROPOSED LANDSCAPE PLANS. CONTACT TRACY WYNN, GIS COORDINATOR, ENGINEERING DIV., FOR UTILITY INFORMATION. 954-545-7007 TRACY.WYNN@COPFL.COM ENGINEERING STANDARD STREET TREE DETAIL 316-1 AND 315-1.
- PENALTIES WOULD BE INCURRED BY THE CONTRACTOR FOR DAMAGES TO THE EXISTING TREES ON SITE FROM THE CONTRACTOR, THE SUBCONTRACTORS, OR EMPLOYEES. ANY ENCRoACHMENT WITHIN THE TREE PROTECTION ZONE, FAILURE TO MAINTAIN THE TREE PROTECTION ZONE, OR ANY DAMAGE TO THE TREE(S) OR CRITICAL ROOT ZONES WILL RESULT IN MITIGATION. THE CAUSE OF DAMAGES WOULD INCLUDE, BUT NOT BE LIMITED TO, STORAGE OF MATERIALS, PLACING FILL OR DEBRIS, DISPOSAL OF PAINT OR SOLVENTS, PARKING OF MACHINES UNDER TREES OR TREE PROTECTION ZONE ENCRoACHMENT. AN EXAMPLE OF THIS WOULD BE; VIOLATIONS OF THIS WILL RESULT IN A FINE OF \$1000.00 FOR THE FIRST OFFENSE, \$1500.00 FOR THE SECOND, AND \$2000.00 FOR THE THIRD, ETC. IF PHYSICAL DAMAGE IS DONE TO THE TREE, AN APPRAISAL OF THE DAMAGES AND RELATED FEES WILL BE DETERMINED BY AN ASCA REGISTERED CONSULTING ARBORIST, AND BE BASED ON ALL, OR A PERCENTAGE OF, THE ESTABLISHED VALUE ASSIGNED TO THE TREE.

INTRACOASTAL WATERWAY



EXISTING TREE SYMBOLS



EXISTING TREE KEY

KEY	NAME
SM	Mahogany
SP	Sabal Palm

SITE CALCULATIONS

ITEMS	REQUIRED	PROPOSED
A. TOTAL LOT AREA		18,000 S.F.
B. STRUCTURE, WALKWAYS, DRIVESWAYS, ETC	13,500 S.F.	13,483 S.F.
C. PERVIOUS LOT AREA	4,500 S.F. (25%)	4,511 S.F. (25.06%)

LANDSCAPE CALCULATIONS

ITEMS	REQUIREMENT	LENGTH (L.F.)	REQUIRED	PROPOSED
NORTH BUFFER	1 TREE/ 40 L.F.	150	4 TREES	4 TREES (4 PIGEON PLUMS)
EAST BUFFER	1 TREE/ 30 L.F.	120	4 TREES	4 TREES (2 SILVER BUTTONWOODS, 2 GREEN BUTTONWOODS)
SOUTH BUFFER	1 TREE/ 40 L.F.	150	4 TREES	4 TREES (4 PIGEON PLUMS)
WEST BUFFER	1 TREE/ 30 L.F.	120	4 TREES	4 TREES (2 COCONUT PALMS, 2 DBL ADONIDIA PALMS)
STREET TREES	1 TREE/ 40 FT	120	3 TREES	3 TREES (3 SIMPSON'S STOPPERS) RIGHT TREE RIGHT PLACE, OHL
MIN. DEVELOPMENT SITE LANDSCAPE	1 TREE/ 3,000 S.F	(18,000 S.F.)	6 TREES	6 TREES (6 JAPANESE BLUEBERRIES)
TOTAL TREES			25 TREES	25 TREES
PALM TREES	MIN. 20% OF TOTAL		4 PALMS MAX.	4 PALMS
NATIVE TREES	MIN. 50% OF TOTAL		13 TREES	13 TREES
SPECIES	MIN. 4 SPECIES		4 SPECIES	4 SPECIES
INTERIOR SHRUBS	5 SHRUBS/ 3,000 S.F.(18,000 S.F.)		30 SHRUBS	>30 SHRUBS

SCALE: 1"=10'-0"

0 5' 10' 20'

PROJECT

RIVERSIDE TOWNHOMES
117 S RIVERSIDE DRIVE
POMPAÑO BEACH, FL

TITLE

LANDSCAPE PLAN

PROJ. NO.

FILE NAME

BB DRAWN

03-20-25 DATE

REV.

SHEET

LP-1

OF

2

DRC

PZ25-12000009

06/18/2025